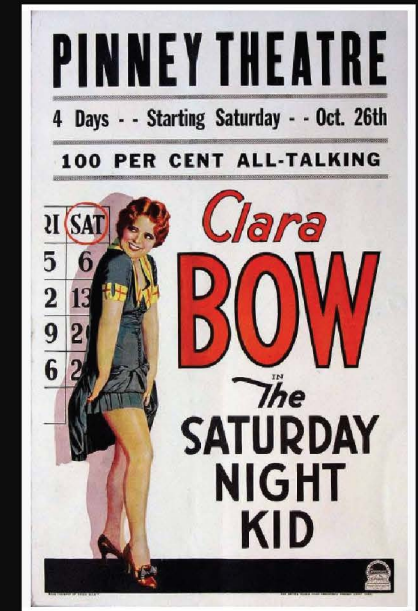




THE ORIGINAL IT GIRL

CLARA BOW™

# BEFORE MADONNA, BEFORE MARILYN THERE WAS CLARA..



**IT GIRL** is defined by the Oxford English Dictionary as; a glamorous, vivacious, sexually attractive actress, model, etc. In 1927, Clara Bow starred in the motion picture "IT" making her the first official **IT GIRL**.

Clara Bow was an American actress who rose to stardom during the silent film era of the 1920s. She transitioned to talkies and quickly became a national sex symbol. She appeared in over 50 films and was the epitome of the roaring twenties.

She radiated sex appeal with an impish sense of humor. She could act on or off the screen and took delight in accepting a challenge to vamp any selected man. She loved to party and cause a stir wherever she went. The roaring twenties are synonymous with Clara Bow. In fact, the iconic "Betty Boop" cartoon character we all know and love was modeled after Clara Bow.



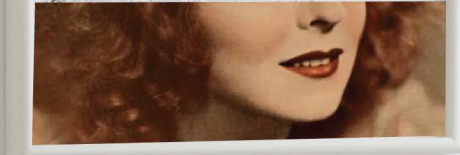
CLARA BOW™





CLARA  
BOW™

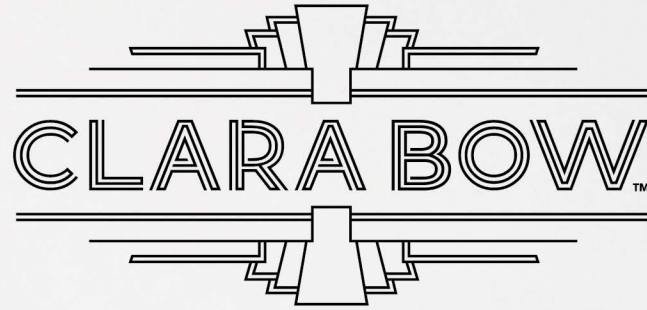
IT GIRL





CLARA BOW

THE ORIGINAL IT GIRL





THE ORIGINAL IT GIRL



CLARA BOW™

RETROBRANDS AMERICA, LLC

FOR LICENSING INQUIRIES CONTACT:  
JEFFREY KAPLAN, PRESIDENT

1771 BLOUNT ROAD SUITE 203  
POMPANO BEACH FL 33069

[954] 203-3097

JEFF@RETROBRANDS.NET  
WWW.RETROBRANDS.NET

